

LETTERINA R. DIMARTINO
Academic Norristown
 Volley Ball Club, 2
 Librarian Club, 4
 Annual Play, 4
 Dramatic Club, 3, 4
 Senior Play, 4
 Senior Chorus, 2, 3, 4

EDWARD DYBICZ
Commercial Swedesburg
 Student Patrol, 2
 Home Room President, 1
 Student Council, 1
 Basketball, 2, 3
 Baseball, 3
 Football Manager, 4
 Stage Manager, 4
 English Club, 1
 Chorus, 4
 May Day, 1
 Varsity, 4
 Press Club, 4

FRANCIS JOHN EDZWALD
Academic Wayne
 Band, 1, 2, 3
 Rifle Club, 2
 May Day, 1, 2, 3

LORETTA R. FILONE
Business King Manor
 Class Secretary, 1, 2
 Student Council, 1, 2
 May Day, 1
 Student Patrol, 1
 Dramatic Club, 3

EVELYN MARIE GILBERT
Academic Bridgeport
 May Day, 1, 3
 Librarian, 4
 Secretary of Librarian
 Club, 4
 Pioneer Staff, 4
 Senior Play, 4
 Art Club, 4
 Bee Club, 1

SARAH JANE GLENN
Academic Valley Forge
 Pioneer Staff, 1, 2, 3, 4
 Editor-in-Chief of Pioneer
 Staff, 4
 Student Council, 3, 4
 Vice President of Student
 Council, 4
 Bee Club, 1
 Art Club, 4
 May Day, 1, 2, 3, 4
 May Queen's Court, 3
 Band, 2, 3, 4
 Senior Executive Board, 4
 Senior Play, 4
 Librarian, 1
 Press Club, 4
 Home Room Secretary, 3

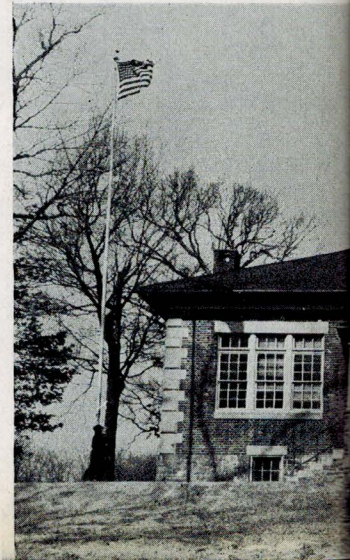
FRANCES E. GUTOWSKI
Academic Swedesburg
 Tennis, 1, 2, 3, 4
 Volley Ball Club, 2
 May Day, 1
 Archery Club, 2
 Sewing Club, 4
 Bee Club, 1
 Camera Club, 1

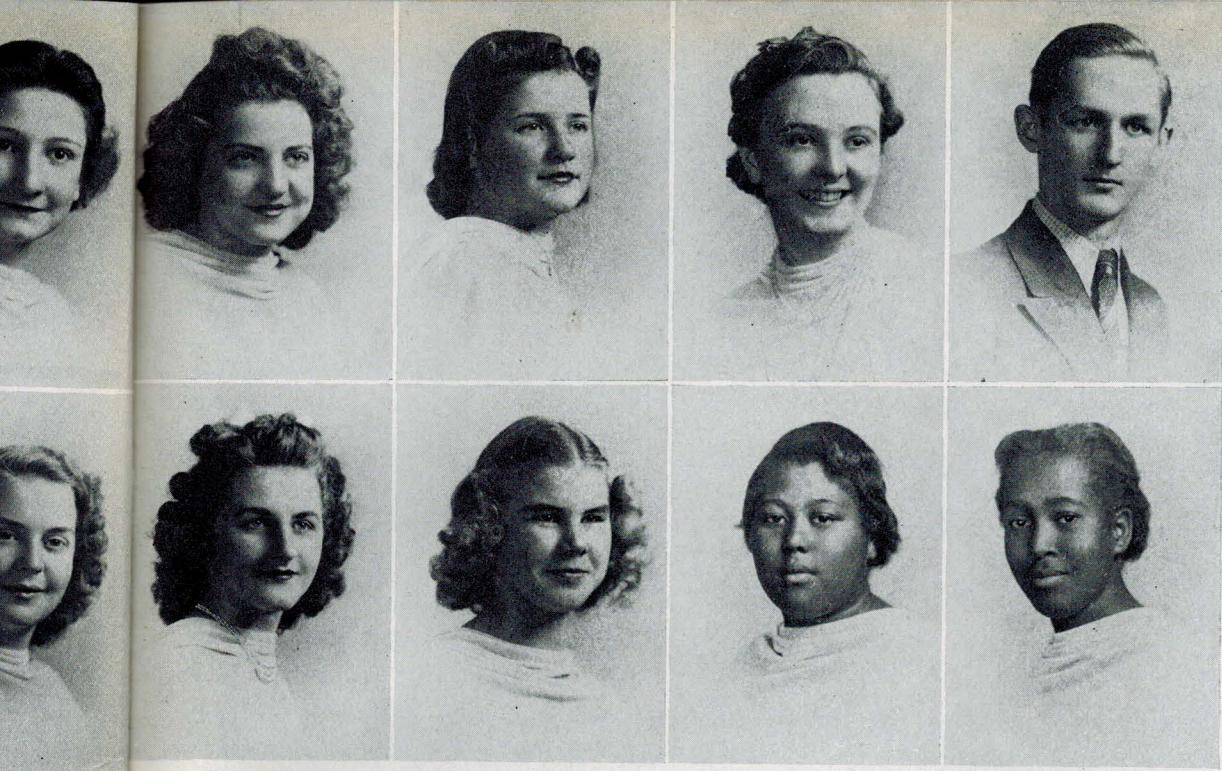
CECELIA EMMA HOLLAND
Commercial Conshohocken
 Hockey, 2, 3, 4
 Band, 2, 3, 4
 Chorus, 3, 4
 May Day, 1, 2, 3
 Student Council
 Secretary, 4
 Assistant Drum Major, 3, 4
 Coed Club, 3
 Pioneer Staff, 4
 Christmas Play, 3, 4
 Dramatic Club, 4
 Home Room Secretary, 4
 Senior Play, 4

Edward J. Dybicz

PORT KENNEDY
 SCHOOL

AS THE PIONEER SEES





R. FILONE
King Manor
y, 1, 2
il, 1, 2
1
3

ANTONETTE R. IMPERIAL
Commercial Swedesburg
Glee Club, 1
Commercial, 2, 3
May Day, 1, 2, 3
Bee Club, 1
Coed Club, 3
Librarian, 1
Sewing Club, 4
Junior Chorus, 1
Volley Ball Club, 2
Cashier's Club, 1
Camera Club, 1

KATHERINE CECELIA KEIL
Academic King of Prussia
Rifle Club, 1, 3, 4
Glee Club, 1
Student Council, 2, 4
Student Patrol, 1, 2, 3
Archery Club, 2
May Day, 1, 2
Home Room Secretary, 2
Dramatic Club, 3
Librarian, 3
Senior Play, 4
Council Executive Board, 4
Press Club, 4

LUCY MARGARET KERR
Commercial King of Prussia
Camera Club, 1, 2
Commercial Club, 2, 3
Chorus, 1, 2, 3, 4
Bee Club, 1, 2
Thrift Club, 1, 2, 3, 4
May Day, 1, 2
Librarian, 1, 2, 4

STANLEY KUNDA
Commercial Swedesburg
Stage Manager, 4
Basketball, 2, 3
English Club, 1
May Day, 1
Class Cabinet, 4
Chorus, 4

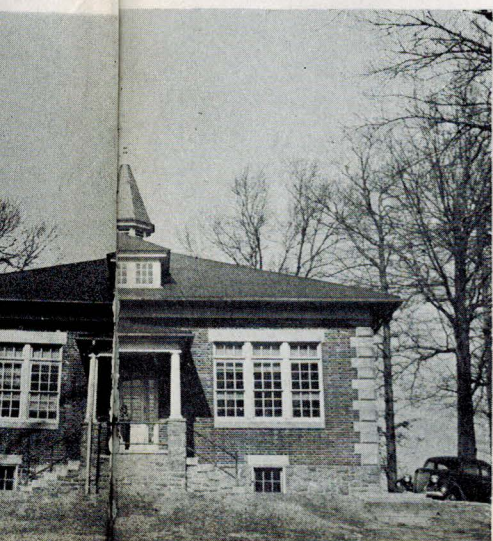
A HOLLAND
Conshohocken
3
1
Major, 3, 4
3, 4
4
Secretary, 4

ANNA KUROSKO
Commercial Swedesburg
Coed Club, 3
May Day, 1, 2
Bee Club, 1
Junior Chorus, 1
Senior Chorus, 4
Sewing Club, 4
Commercial Club, 2, 3
Student Patrol, 1
Volley Ball Club, 2
Librarian, 1
Cashier Club, 1
Camera Club, 1

DOROTHY LAWRENCE
Commercial Conshohocken
Basketball, 2
Commercial Club, 2, 3
May Day, 3
Thrift Club, 3
Senior Play, 4

ALMA FLORENCE LEE
Commercial Conshohocken

BESSIE ANN LEE
Business Conshohocken



BILLETS — BLOOMS — SLABS

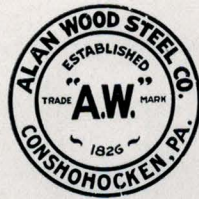
SHEARED STEEL PLATES

HOT ROLLED SHEETS

ROLLED STEEL FLOOR PLATES

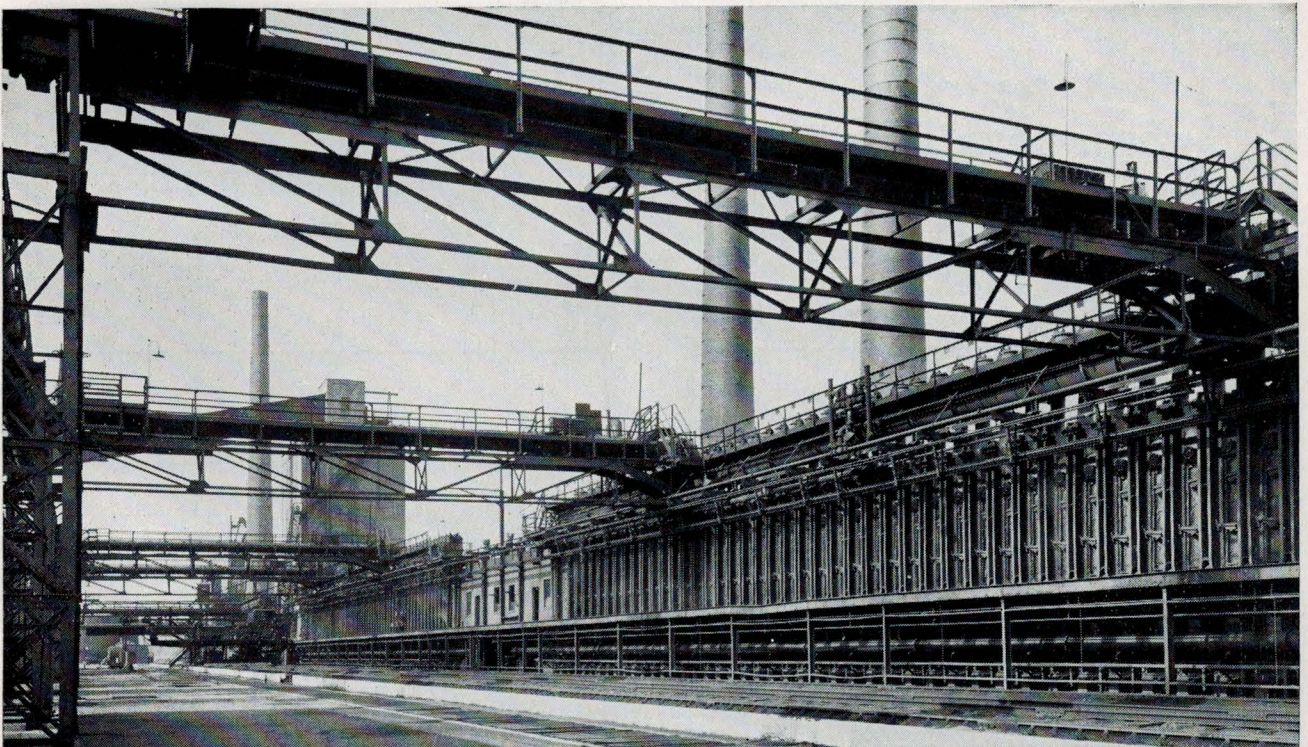
Furnished in Carbon, Copper or Alloy Analyses

"A. W." DYN-EL STEEL PLATES AND SHEETS



ALAN WOOD STEEL COMPANY

CONSHOHOCKEN, PENNA.



Batteries of coke ovens in the Rainey-Wood plant

OFFICE:
CONSHOHOCKEN, PA.

RAINEY-WOOD COKE COMPANY

PLANT:
SWEDELAND, PA.